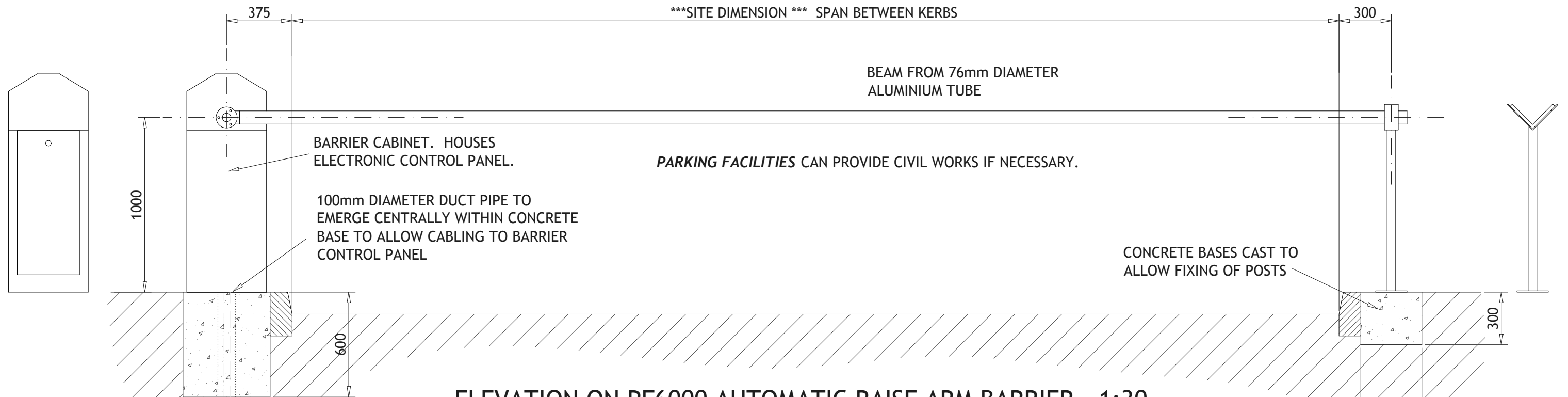
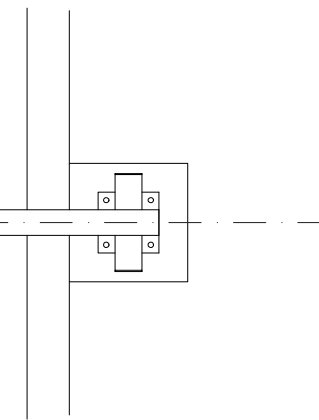


CONCRETE BASE SPECIFICATION:
TO BE CAST A MINIMUM OF 7 DAYS BEFORE BARRIER INSTALLATION
GRADE TO BE C25 DPC, 20mm GRAVEL



4C X 1.5mm² MIN. MULTICORE XLPE/SWA/PVC FOR PUSH BUTTON OPERATION

500 SQ.

3C X 1.5mm² MIN. MULTICORE XLPE/SWA/PVC FOR MAINS SUPPLY TO BARRIER

ELEVATION ON PF6000 AUTOMATIC RAISE ARM BARRIER - 1:30

BARRIER SPECIFICATION:

CONSTRUCTION : CABINET - STEEL, BEAM - ALUMINIUM
 SPANS : 2500mm TO 6500mm
 FINISH : CABINET - RED (CORPORATE COLOURS AVAILABLE UPON REQUEST), BEAM - RED/WHITE
 DRIVE UNIT : MOTOR & GEARBOX
 OPERATING SPEED : 1.2 TO 6 SECONDS
 OPERATING SUPPLY : 230V SINGLE PHASE @ 50HZ, 6 AMPS
 MANUAL OPERATION : INCORPORATED AS STANDARD
 CONTROL OPTIONS : CARD, RADIO, TOKEN, KEYPAD, INTERCOM, PUSH BUTTON, VEHICLE TRANSPONDER, INDUCTION LOOP & PHOTOCCELL
 ACCESSORIES : CORPORATE COLORS, STOP SIGNS, BOOM LIGHTS, PVC CURTAIN SKIRT (HALF HEIGHT ONLY), VARIOUS END SUPPORT POSTS & CARD READER MOUNTING POSTS.



Warwick House, Chantry Industrial Estate,
Kingsbury Road, Curdworth, Sutton Coldfield. B76 9EE
Tel: 01675 471122 Fax: 01675 471133
Email: sales@parkingfacilities.co.uk

DRAWN BY :	G. SEAL	TITLE : PARKING FACILITIES - DATASHEET PF6000 AUTOMATIC RAISE ARM BARRIER	
DATE :	11/10/02		
SCALE :	1:30	DRAWING NUMBER : PF6000-DS1	REVISION : 'A'